



KaWaTech wall coating system

Lengheim Consulting & Entwicklung GmbH

Bahnstraße 16, 2213 Bockfließ



A WORLD FIRST in sealing and protection!

What would you say if you heard that there was a coating which

- protects against water penetration
- prevents damage caused by salt spreading
- but still allows the masonry to breathe?

Impossible? – Well we have the answer!



KaWaTech®
der folienbildende Anstrich



Everyone is familiar with the following problems:



Algae growth on house walls



Foundations destroyed by salt spreading

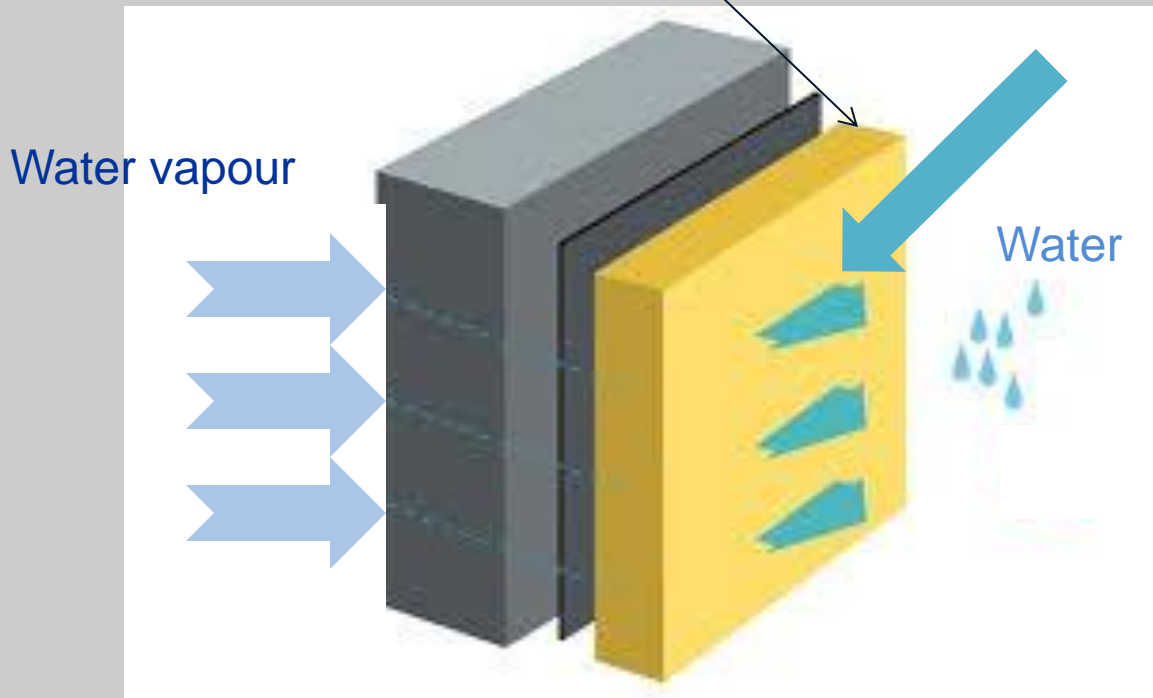


Building structures damaged by dog urine



We have just the protective layer for your wall

KaWaTech -layer



It prevents water penetration

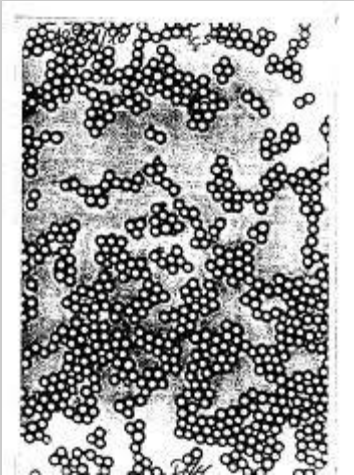
It is permeable to water vapour

**KaWaTech,
the functional coating
for your wall**

KaWaTech®
der folienbildende Anstrich



KaWaTech is an innovative coating made of plastic



The special composition enables a vapour-permeable plastic film to form as it dries. The coating is a completely harmless aqueous dispersion. The **drying time** is between **4 and 24 hours** depending on the temperature. The aqueous base necessitates a **processing temperature of at least 5°C.**



Photographic documentation of one use (treatment of a wall with algae growth)



Algae growth on silicate plaster



after being cleaned with mould stain remover



after being coated with KaWaTech

As a result of applying KaWaTech and keeping out water (from heavy rain), the treated facade remains unchanged after two years.

KaWaTech®
der folienbildende Anstrich



Advantages:

- The coating can be used on all dry and cleaned masonry.
- The coating can be rolled or sprayed on.
- The preset film thickness is 0.4 to 0.8 mm.
- The impermeability to water prevents algae growth and reduces the damage caused by chemicals (de-icing salt).



Photographic documentation (protection against dog urine)



All surfaces portrayed here have been cleaned under high pressure and then coated with KaWaTech.





Advantages – protection against dog urine:

- The coating can be used on all dry and cleaned masonry.
- The coating can be rolled or sprayed on.
- The preset film thickness is 0.4 bis 0.8 mm.
- The impermeability to water/urine reduces the amount of damage to the masonry.
- Special extracts of „*Coleus canina*“ (Plectranthus) also provide months of protection against fresh markings.
- Affected areas are also easier to clean after treatment.



KaWaTech®
der folienbildende Anstrich



Customer groups

KaWaTech provides optimal protection for:

- All new facades and concrete elements
- Old houses with porous foundations
- Facades with algae deposits
- Facades severely damaged by de-icing salt in the dado
- Facades damaged by dog urine

KaWaTech should be used, after cleaning, on dry substrate in a stable temperature range between +5°C and 45°C and not in direct sunlight.



KaWaTech is

- a world first
- patented in accordance with European patent law
- a high-tech coating consisting of a vapour-permeable plastic film
- universally designed for the protection of masonry against moisture, chemicals and dog urine
- easy to use

a real problem solver!